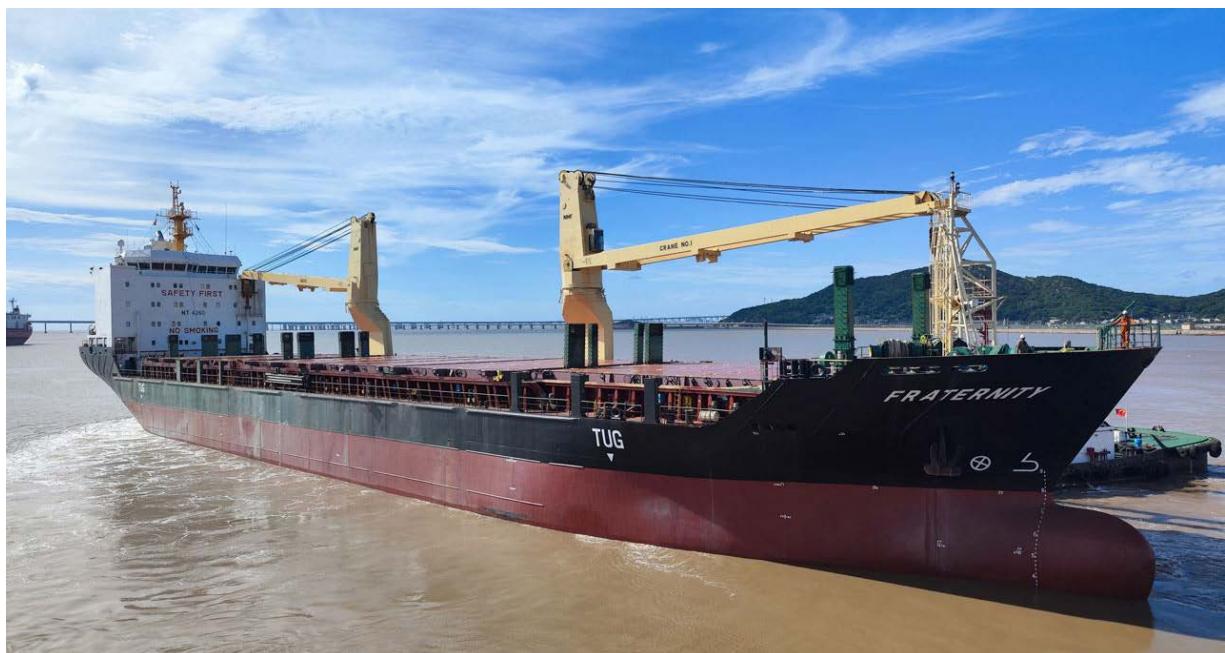

SHIP'S PARTICULARS

F-CLASS 360

12K-360



SHIP'S PARTICULARS

F-CLASS 360



MV INDUSTRIAL FRATERNITY

GENERAL INFORMATION

Vessel type	Double Hull Box-Shaped MPP TWD
Flag	Antigua & Barbuda
Port of registry	St. John's
IMO	9402055
Built	2008

DIMENSIONS

Length over all	138.07 m
Breadth over all	21.00 m
Max. draft loaded summer	8.0 m

TONNAGE

Dead weight a.t.	12 672 t
Gross	9 620 t
Net	4 260 t

CAPACITY

Bale cbm	15 953 cbm
Bale cbft	563,374.88 cbft

SPEED

Normal	abt. 14.0 kn
---------------	--------------

GEAR

Type of Gear	2 x 180 mt 360 mt combinable
---------------------	---------------------------------

CONTAINERS

Hold	330 TEU
Deck	331 TEU
Total	661 TEU

HOLD

No. of Holds	3
Hold 1	18.75 m x 15.02 m/10.06 m
Hold 2	42.33 m x 17.50 m
Hold 3	26.00 m x 17.50 m

HATCH

No. of Hatches	3
Height	No. 1: 10.53 m No. 2: 11.18 m No. 3: 10.77 m
Hatch Cover	No. 1: 18.75 m x 15.02 m/10.06 m No. 2: 42.00 m x 17.50 m No. 3: 25.50 m x 17.50 m
Hatch cover type	Hydraulic Folding Covers

TWEEN DECK

Positions	Hold No. 1: 1 position Hold No. 2: 3 positions Hold No. 3: 1 position
------------------	---

MAX. PERMISSABLE LOADS

Tanktop	16 mt / m ²
Tween Deck Hatch	4 mt / m ²
Weather Deck	1.75 mt / m ²

TANK CAPACITY

IFO 380	948 cbm
Fresh Water	131 cbm

MISCELLANEOUS

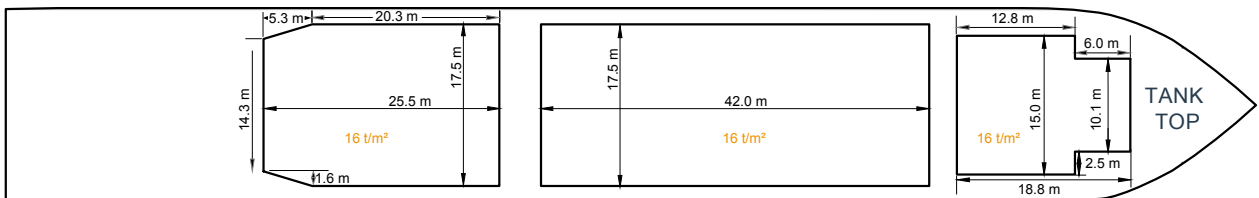
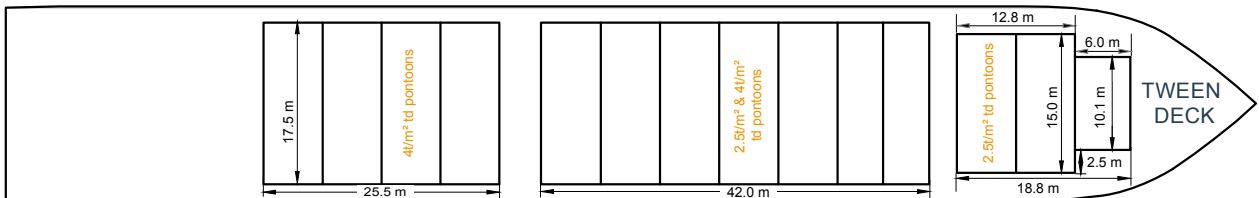
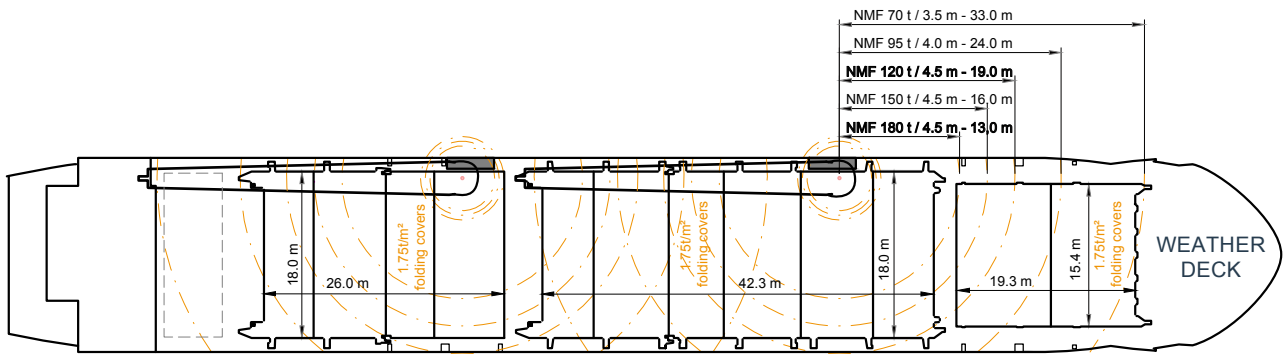
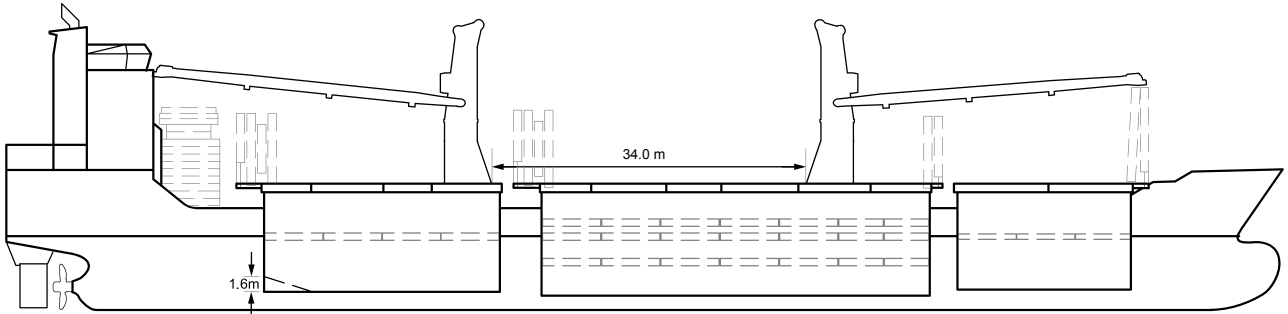
IMO Fitted	
Lakes Fitted	

All particulars believed to be correct, but not guaranteed.

SHIP'S PARTICULARS

F-CLASS 360

GENERAL ARRANGEMENT PLAN



All particulars believed to be correct, but not guaranteed.