



SAL

SHIP PARTICULARS TYPE 161A

Name	Built	Flag	Name	Built	Flag
Wiebke	2000	German	Annegret	2000	Antigua & Barbuda
Paula	2000	Antigua & Barbuda	Grietje	2000	Antigua & Barbuda

GENERAL INFORMATION

Type	High Speed Heavy Cargo Vessel
Classification	GL + 100 A5 SOLAS-II-2 Reg. 19 C2P51, General Cargo Ship, Strengthened for Heavy Cargo

TONNAGE

DWT (abt.)	9,370 mt
GT / NT (Int'l 69)	8,397 / 4,178
GT / NT (Suez)	8,572 / 6,915
NT (Panama)	7,636

MAIN DATA

LOA	151.67 m
Beam	20.40 m
Summer Draft	7.85 m
Max Speed (abt.)	20 knots

HOLDS/HATCHES

Number	1 Hold / 1 Hatch
Hold No. 1	82.90 m x 15.80 m x 10.97 m
Hatch Cover	MacGregor hydraulic operated combined folding type and lift and roll type

CARGO CAPACITY

With Tweendeck	13,604 cbm / 480,430 cbft Bale
----------------	--------------------------------

FLOOR SPACE

Free deckspace dims	124.00 m x 20.50 m
Free deckspace	2,329 m ²

MAX. PERMISSABLE LOAD

Tanktop	15 mt/m ²
Tweendeck	4 mt/m ²
Hatchcovers	3 mt/m ²

CARGO HANDLING GEAR

Cranes	2 x 320 mt (portside) + 1 x 200 mt
Combined Lift Capacity	640 mt

SPECIAL EQUIPMENT/FEATURE

Bowthruster	750 kW
-------------	--------

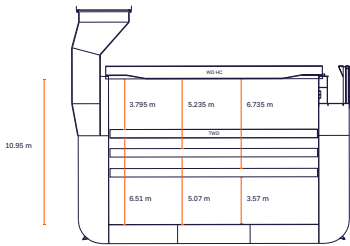
All details including speed are given in good faith and can vary on the individual vessels. They are to be considered „about“, are given without guarantee and must not be used as basis for charterparties or contracts without SAL's explicit written authority.

Last Revised: April 2026

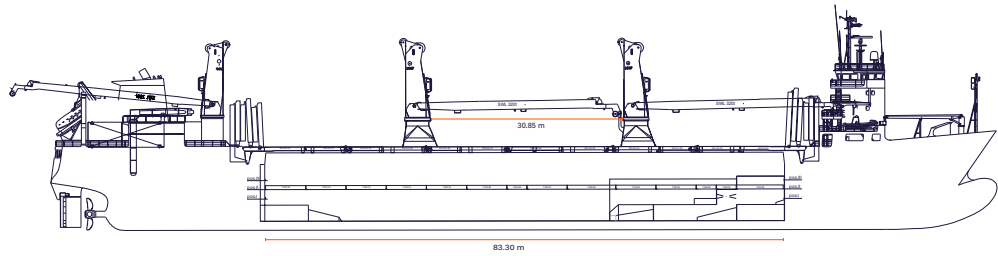
**TYPE 161A
WIEBKE
PAULA
ANNEGRET
GRIETJE**

SAL

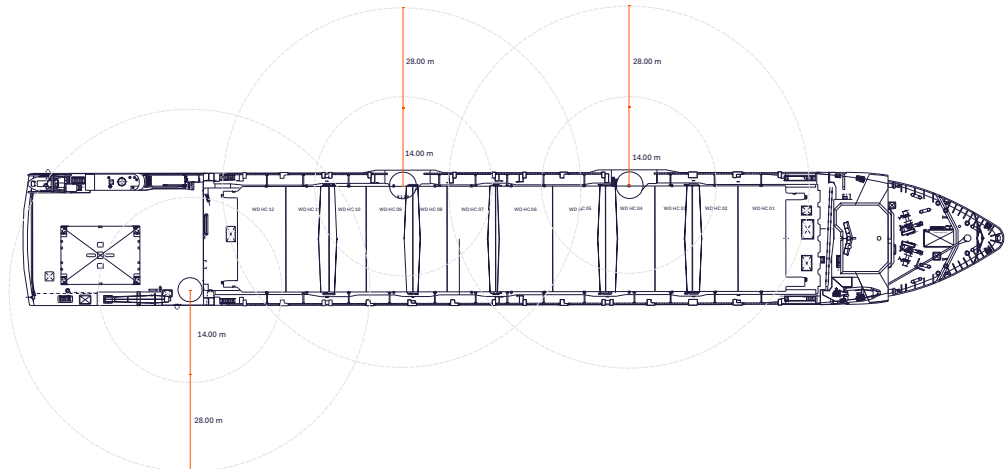
BACK



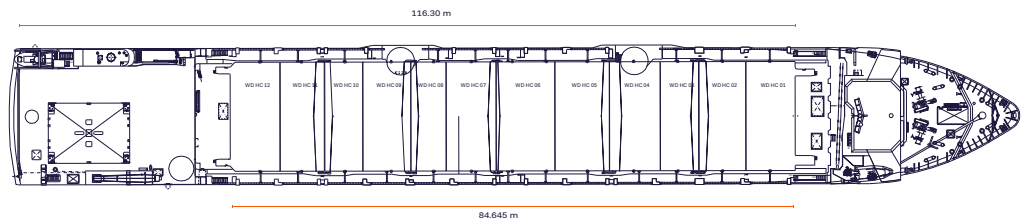
SIDE



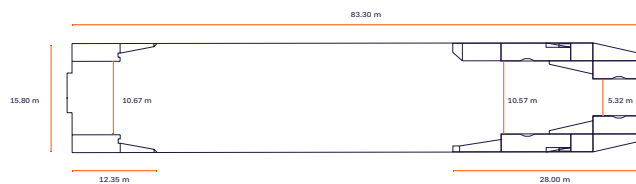
MAINDECK



TWEENDECK



TANKTOP



All details including speed are given in good faith and can vary on the individual vessels. They are to be considered „about“, are given without guarantee and must not be used as basis for charterparties or contracts without SAL's explicit written authority.

Last Revised: February 2026