



# SHIP PARTICULARS TYPE 176

Name	Built	Flag	Name	Built	Flag
Regine <sup>1)</sup>	2009	Portugal	Anne-Sofie <sup>2)</sup>	2008	German
Trina <sup>1)</sup>	2008	Portugal	Frauke <sup>2)</sup>	2008	Antigua & Barbuda

## GENERAL INFORMATION

Type	High-Speed Heavy Cargo Vessel
Classification	HULL GL+100 A5 G SOLAS II-2 REG. 19 General Cargo Ship, strengthened for Heavy Lift Cargo Machinery MC AUT

## TONNAGE

DWT (abt.)	11,940 mt <sup>1)</sup> / 12,007 mt <sup>2)</sup>
GT / NT (Int'l 69)	12,950 / 4,647
GT / NT (Suez)	13,481 / 12,827
NT (Panama)	10,879

## MAIN DATA

LOA	159.80 m
Beam	24.00 m
Summer Draft	9.00 m
Max Speed (abt.)	20 knots (Trial) / 19 knots (Service)

## HOLDS/HATCHES

Number	1 Hold / 1 Hatch
Hold No. 1	107.10 m x 17.00 m x 13.10 m
Hatch Cover	MacGregor hydraulic operated combined folding type and lift and roll type

## CARGO CAPACITY

Without Tweendeck	19,299 cbm / 635,982 cbft Bale
With Tweendeck	18,009 cbm / 635,981 cbft Bale

## FLOOR SPACE

Free deckspace dims	127.50 m x 24.00 m
Free deckspace	2,918 m <sup>2</sup>

## MAX. PERMISSABLE LOAD

Tanktop	18 mt/m <sup>2</sup>
Tweendeck	5 mt/m <sup>2</sup>
Hatchcovers	5 mt/m <sup>2</sup>

## CARGO HANDLING GEAR

Cranes	2 x 700 mt (portside) + 1 x 350 mt
Combined Lift Capacity	1,400 mt

## SPECIAL EQUIPMENT/FEATURE

Bowthruster	900 kW
-------------	--------

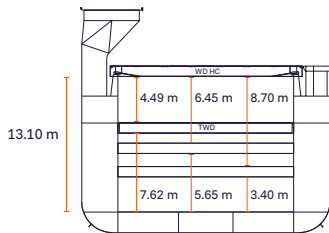
All details including speed are given in good faith and can vary on the individual vessels. They are to be considered „about“, are given without guarantee and must not be used as basis for charterparties or contracts without SAL's explicit written authority.

Last Revised: March 2026

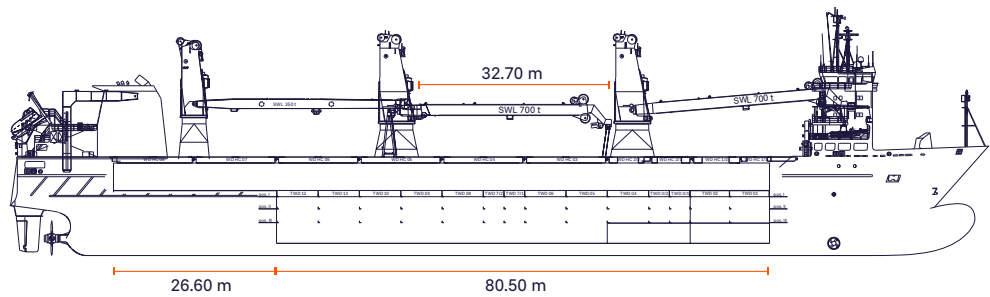
**TYPE 176  
REGINE  
TRINA  
ANNE-SOFIE  
FRAUKE**

**SAL**

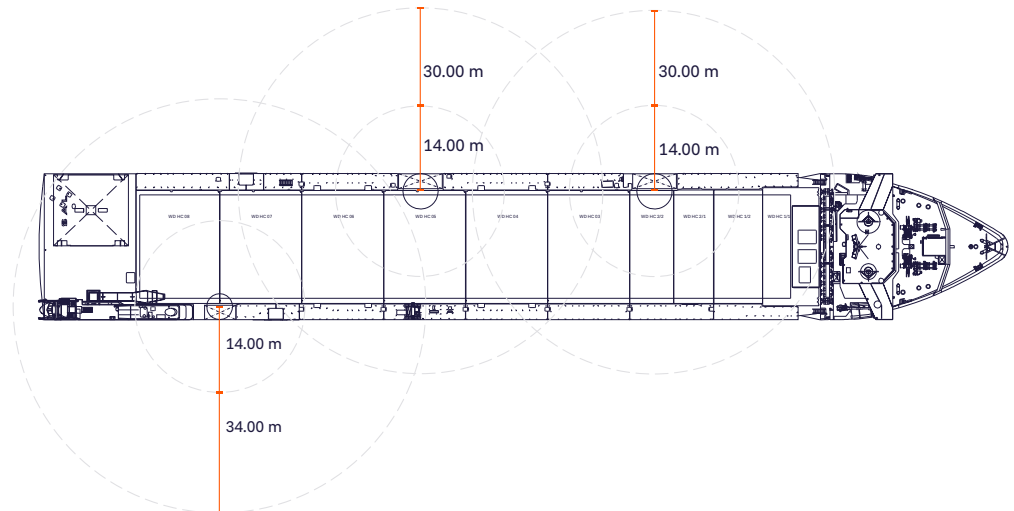
**BACK**



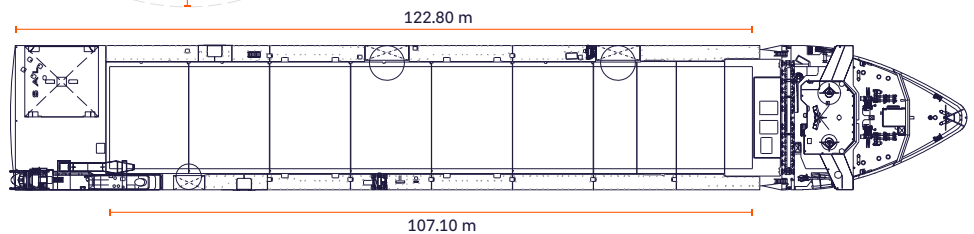
**SIDE**



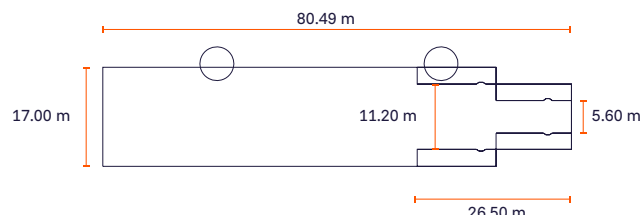
**MAINDECK**



**TWEENDECK**



**TANKTOP**



All details including speed are given in good faith and can vary on the individual vessels. They are to be considered „about“, are given without guarantee and must not be used as basis for charterparties or contracts without SAL's explicit written authority.

Last Revised: March 2026