



SHIP'S PARTICULARS

TYPE 161

High-speed heavy cargo vessel



SHIP'S PARTICULARS

TYPE 161



MS Annemieke 1998/04
Flag of Registry: Antigua Barbuda
Port of Registry: St. John's

Owner: Salto Holding GmbH & Co. KG
Operator: SAL Heavy Lift GmbH
Technical Manager: SAL Ship Management UG (haftungsbeschränkt) & Co. KG
HSE Manager: SAL Ship Management UG (haftungsbeschränkt) & Co. KG

Classification: GL + 100 A5, SOLAS-II-2, Reg.19 C2P51
General Cargo Ship, Strengthened for Heavy Cargo
Heavy Lift Ship

Shipyard: J.J Sietas KG, Germany

Length over all: 151.65 m **Speed @ 85% MCR:** 18 kn
Length between perps.: 142.10 m **Air draught (jibs in rest.):** 34.1 m
Breadth moulded: 20.40 m
Breadth over all: 20.65 m
Depth moulded: 10.50 m

GT (int'l 69): 8388 t
NT (int'l 69): 4178 t
GT (Suez): 8561.34 t
NT (Suez): 6903.77 t
NT (Panama): 7628 t

(Summer)

Draught 7.85 m
Deadweight: 9 544 t
Freshwater Allowance: 149 mm
Freeboard: 2.679 m
Displacement: 14 880 t

Capacity BW: 3979.10 m³
Capacity GO: 214.22 m³
Capacity HFO: 1083.35 m³
Capacity FW: 123.99 m³

Cargo gear: 2 cranes, each 275 t SWL (in combination 550 t); 1 crane 150 t SWL;
Auxiliary hoist 2 x 32 t SWL; 1 x 10 t SWL.

Hatch cover: MacGregor hydraulic operated combined folding type and lift and roll type
Number of holds: 1
Number of hatches: 1
Dimension of hold: 82.90 x 15.80 x 11.17 m
Volume of hold: 13 614 m³
Bale capacity: 451 800 cuft
Free deckspace: 2120 m²

Main Engine: MAN B & W 9L 48/60; 9450 kW (12 852 hp Converted 4955 kW)
Rudder: Flap type spade rudder (high efficiency rudder)
Bow Thruster: Lips 750 kW (1020 hp)

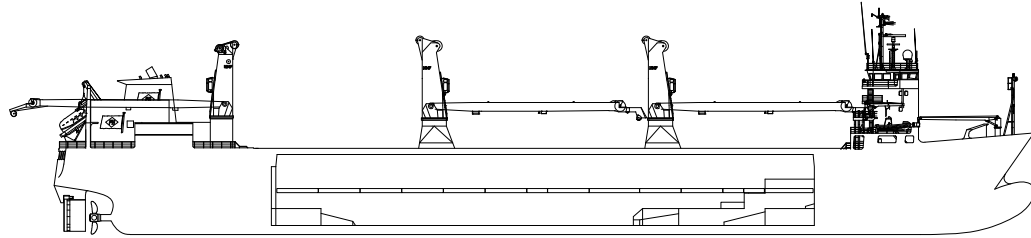
Certifications:



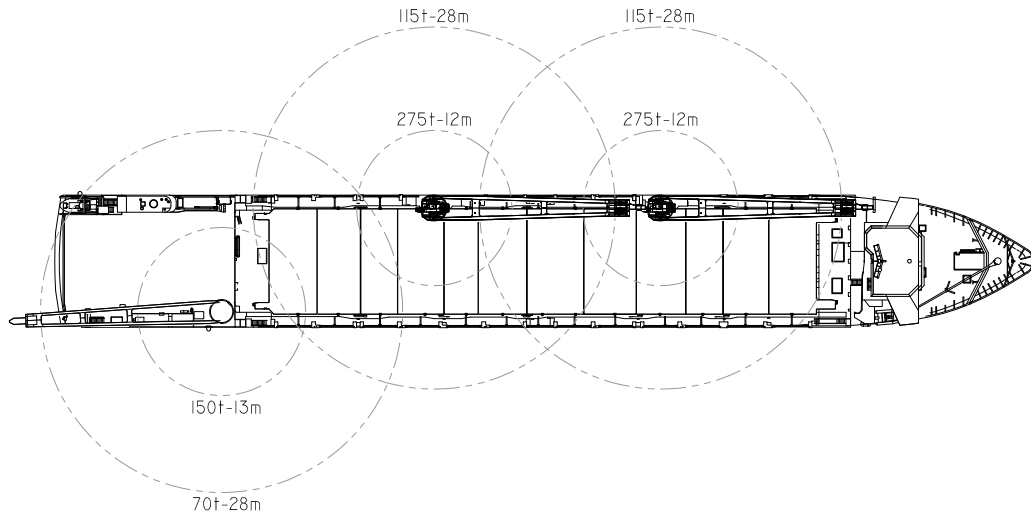
All details are given in good faith but without guarantee of accuracy and completeness

SHIP'S PARTICULARS

TYPE 161



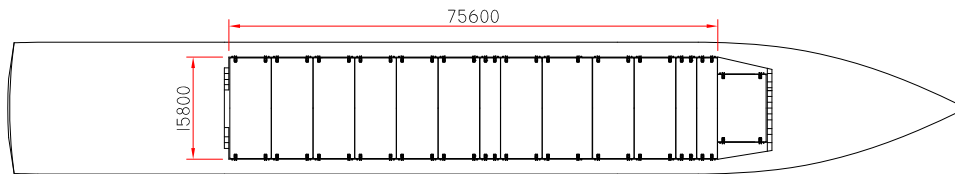
115t-28m 115t-28m



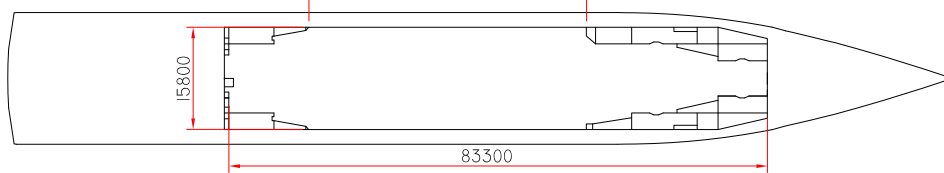
275t-12m 275t-12m

150t-13m

70t-28m



42950



83300

